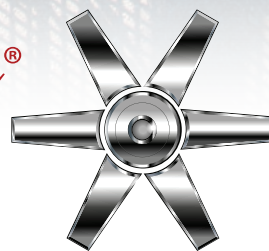


# CLASS 20000 FANS

---



*Moore*<sup>®</sup>  
FANS



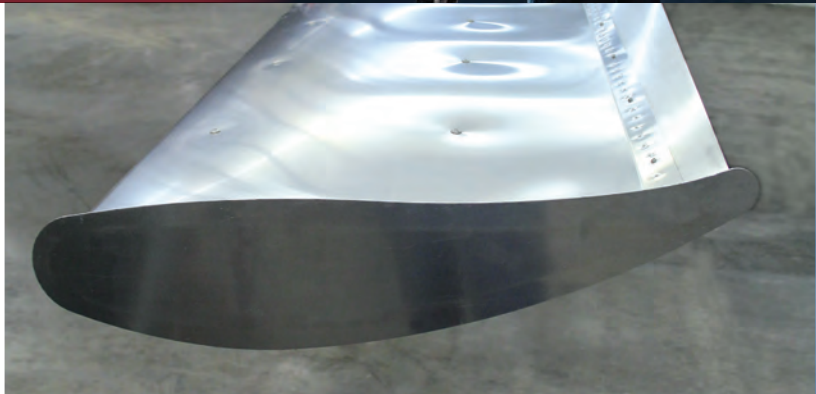
# AIR MOVEMENT ON A MASSIVE SCALE

When it comes to some of the biggest air movement challenges, Moore Class 20000 fans are up to the task. Designed using the same rigorous engineering as our Class 10000 fans, Class 20000 sets the standard for fans in the 24 to 36 foot diameter range. Their large diameter makes them ideal for water cooling towers, air cooled condensers and other applications that demand high performance and reliability.

Our fabricated, non-extruded blades feature a proprietary twisted and tapered airfoil design to provide maximum air flow with minimal weight and noise. To further enhance efficiency, vortex tips on each blade reduce drag while an aerodynamic airseal over the hub prevents backflow.



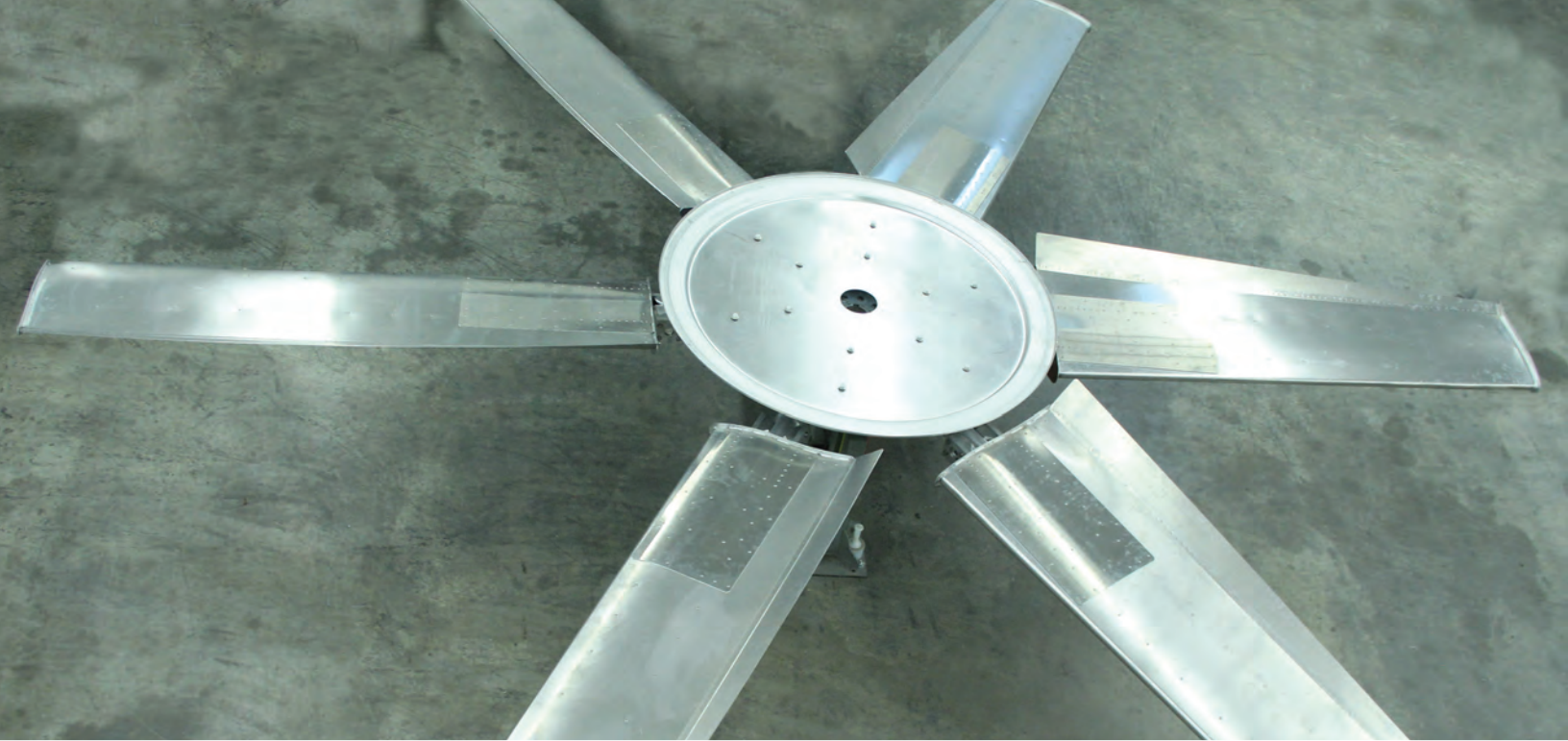
Galvanized steel hub



Vortex tips reduce noise and increase efficiency



Lighter weight but supports 1,000 lbs at tips



Available in 24 to 36 feet diameter

## Precision Adjustments

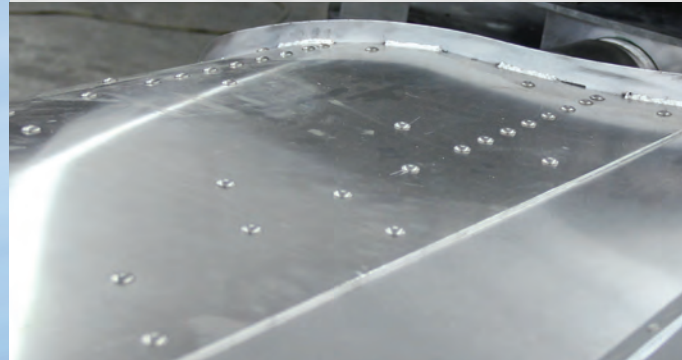
Once installed, you can make adjustments to the diameter (up to 1.5 inches) of the fan to dial in the perfect level of performance, precisely fitting the fan rotor to suit the fan ring. Blade angles are also adjustable, allowing Class 20000 fans to achieve optimal performance. In addition, Moore Fans engineers can design and build any incremental diameter needed for your specific application.



Adjustable diameter and blade angle

## Manufactured Aluminum Components

By manufacturing blades of fabricated aluminum, we're able to achieve a more lightweight, efficient airfoil design than models that rely on fiber reinforced plastic (FRP) or aluminum extrusions. Our blades are manufactured using 5052 marine grade aluminum, which provides resistance to salt water corrosion, are labeled non-sparking by the American Society of Metals, and are non-flammable. Aluminum also mitigates the effects of erosion/pitting from sand, all without any special coatings or additional materials. The standard hub plates are galvanized for additional weather resistance, but stainless steel and aluminum hub plates are available as an option.



Maximize airflow and efficiency



5052 marine grade aluminum blade



## **A TRUE PARTNER IN INDUSTRIAL AIR FLOW SOLUTIONS**

---

Since 1940, Moore Fans has been manufacturing high-efficiency, high-quality axial flow fans for industrial applications. Today, more than 400,000 Moore fans operate across the globe in air-cooled heat exchangers, cooling towers, radiators and more.

We work as an extension of your team, integrating custom solutions directly into your engineering plans. Then we manufacture them utilizing the latest machining and testing procedures to achieve unmatched quality in every component. The result is some of the highest efficiencies and lowest noise levels in the industry.

## **WE'RE HERE TO HELP**

---

As your partner in developing air flow solutions, know that we're always at your service. Facing a new air movement challenge? Our experts are here to collaborate with you.

### **Moore Fans LLC**

Main Sales Office and Factory  
800 South Missouri Avenue  
Marceline, Missouri 64658 USA  
Phone: 660.376.3575  
Fax: 660.376.2909  
[moorefans.com](http://moorefans.com)

### **Moore Fans Limited**

European Sales Office  
PO Box 3245  
Eastbourne  
East Sussex  
BN21 9TG  
Phone: + 44 1424 845725  
[mail@moorefans.eu.com](mailto:mail@moorefans.eu.com)